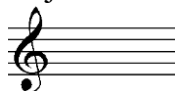


KEY SIGNATURE

Key signature refers to two figures placed at the beginning of a staff after the clef sign used to tell the key of that music. There are two types of key: Natural keys, sharp keys and flat keys. Natural key has no sharp or flat as key signature. Sharp keys make use of sharps and they include G major, D major, A major, E major, B major, F# major and C# major. Flat keys are made up of flats and they include F major, Bb major, Eb major, Ab major, Db major, Gb major and Cb major.



C major has no sharp or flats as key signature. It is called the **natural key**

SHARP KEY SIGNATURE	KEY	NUMBER OF SHARPS
	G major	One sharp at F
	D major	Two sharps at F and C
	A major	Three sharps at F, C and G
	E major	Four sharps at F, C, G and D
	B major	Five sharps at F, C, G, D and A
	F# major	Six sharps at F, C, G, D, A and E
	C# major	Seven sharps F, C, G, D, A, E and B

FLAT KEY SIGNATURE	KEY	NUMBER OF FLATS
	F major	One flat at B
	Bb major	Two flats at B and E
	Eb major	Three flats at B, E and A
	Ab major	Four flats at B, E, A and D
	Db major	Five flats at B, E, A, D and G
	Gb major	Six flats at B, E, A, D, G and C
	Cb major	Seven flats at B, E, A, D, G, C and F